

ConvaTec

Curved Clip for Drainable Pouches

(en) English

Instructions for use



Instructions for use

Intended Use: Closing drainable ostomy systems

Indications for Use: For use with a colostomy or ileostomy; and with compatible ConvaTec drainable ostomy systems.

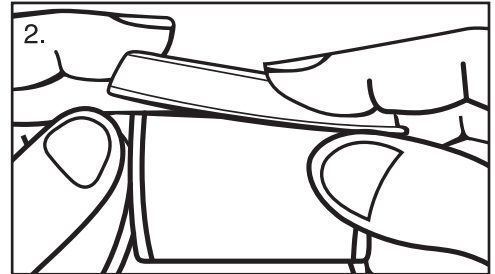
Fitting the NEW Curved Clip to a drainable pouch



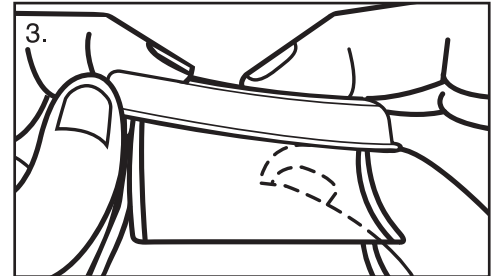
Ensure clip is positioned with the curve away from the body. Place the thin bar of the open clip on top of the drainage outlet and fold the outlet over the bar **once only**.

If during the use of this device or as a result of its use a serious incident has occurred, please report it to the manufacturer and to your national authority.

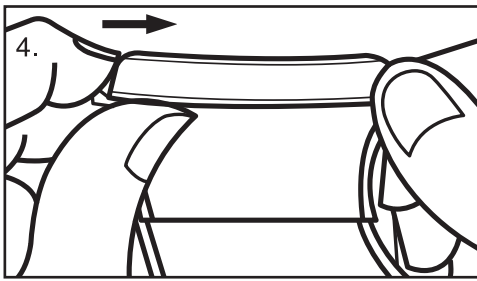
After use, this product may be a potential biohazard. Handle and dispose of in accordance with accepted medical practice and applicable local laws and regulations.



Holding the end of the drainage outlet firmly, close down the closing bar of the clip until the clip locks.



Make sure the clip is securely closed by pressing the two parts of the clip together firmly along its entire length.



4.
To open, pull in the tab at the top of the clip and push away the closing bar as shown.



Medical Device



Importer



Consult instructions
for use



Single Patient - multiple use

Distributed by:



ConvaTec



ConvaTec Limited
First Avenue, Deeside Industrial Park
Deeside, Flintshire, CH5 2NU, UK

ConvaTec Inc.
Greensboro, NC 27409



UNOMEDICAL A/S
Aaholmvej 1-3, Osted
4320 LEJRE DENMARK



© 2022 ConvaTec Inc.
®/™ indicates a trademark of ConvaTec Inc.

Revised 2022-05
1025776V2